

**MANOR**

THRESHING BARN THE GREEN  
HETHE | OX27 8EU



Nestled in the charming village of Hethe, The Threshing Barn presents an opportunity to acquire a stunning converted barn that seamlessly blends modern living with rustic charm. This impressive property boasts an expansive 2,478 square feet of living space, offering ample room for both relaxation and entertainment.

5



3



3



D







The grandeur of double-height ceilings enhances the sense of space and light throughout the home. The property features three large, well-appointed reception rooms, perfect for hosting gatherings or enjoying quiet evenings with family. The exposed beams add character and warmth, creating a welcoming atmosphere that is both stylish and inviting.

The residence comprises five generously sized bedrooms, providing ample accommodation for large families or guests along with three bathrooms. The ground floor annexe with kitchenette, which can serve as a guest suite, home office, or separate studio, caters to a variety of needs. The gated entrance ensures privacy and security, making this home a tranquil retreat.

Accessed through electric gates there is ample parking to the front. The enclosed, south to west facing, rear garden has been designed to include various outside zones ideal for entertaining/dining along with a useful garden shed.

The Threshing Barn is not just a house; it is a lifestyle choice.

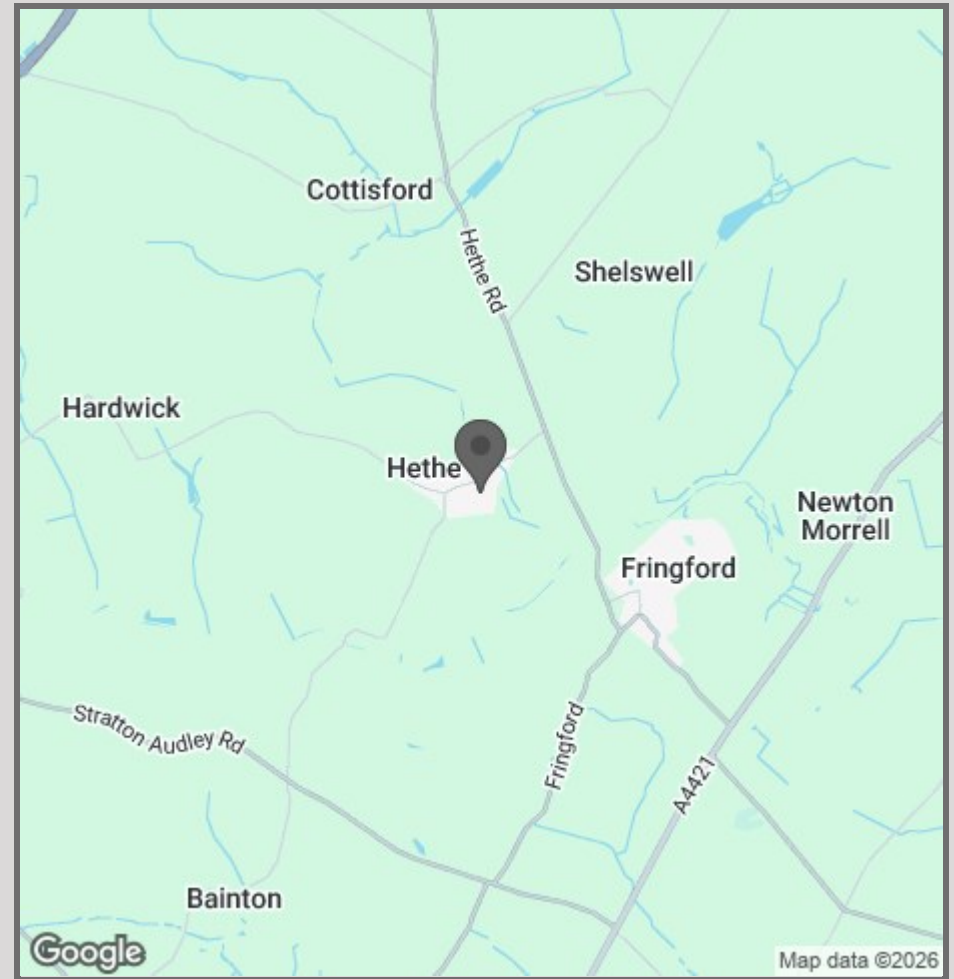
Hethe is a rural village set in attractive north Oxfordshire countryside with excellent communication links. Local amenities are found nearby in the market towns of Bicester, Brackley and Buckingham.

Transport connections include train services from Bicester North to London Marylebone in 51 minutes. M40 junction 10 is within 2 miles providing access to Oxford/London to the south and Banbury to the north. There are local primary schools at Fringford, Croughton and Finmere and state secondary schools at Bicester, Brackley and Upper Heyford. Nearby private schools include Beachborough, Stowe, Tudor Hall, Bloxham and Winchester House.





- Beautifully renovated barn conversion
- Annexe
- Off road parking via electric gates
- Open plan vaulted living room
- Roll top bath
- Ideal for London commuters
- Walled garden
- Utility
- Exposed beams
- Close to top private schools



42 High Street  
Woodstock  
OX20 1TG

01865 955500

[hello@manoroxford.com](mailto:hello@manoroxford.com)

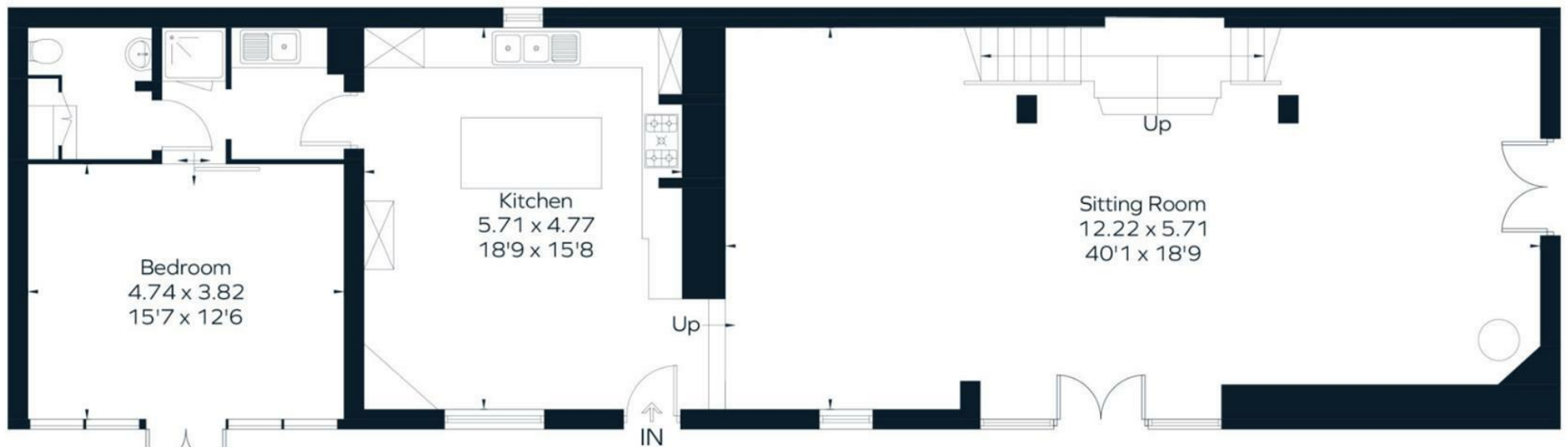
[www.manoroxford.com](http://www.manoroxford.com)

MANOR



First Floor

 = Reduced head height below 1.5m



Ground Floor

**MANOR**